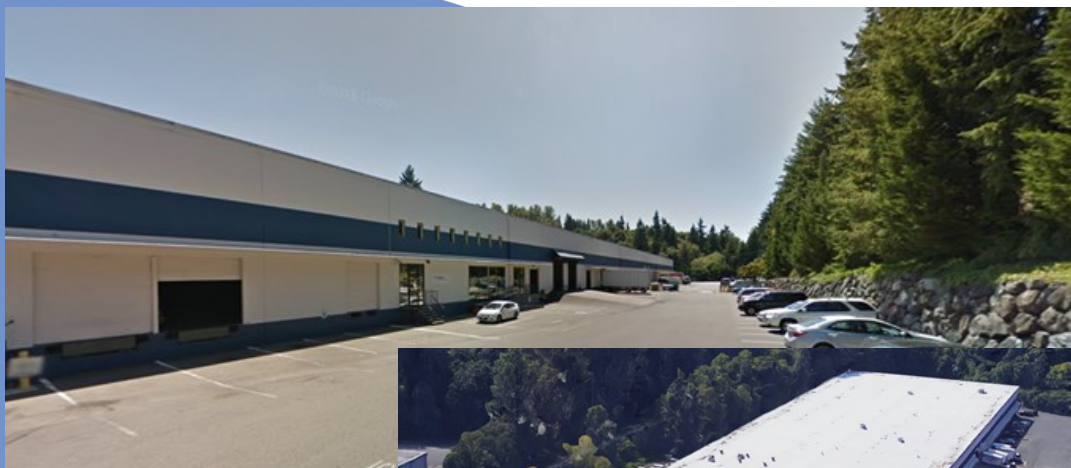




WAREHOUSE SPACE FOR LEASE



**Parmac Industrial Park
10850 117th Place NE
Kirkland, WA 98033**

SUHRCO manages a diverse portfolio of commercial and multifamily residential properties in the Puget Sound region. Established in 1973, the company employs more than 300 experienced professionals dedicated to meeting the management, leasing and brokerage needs of building owners, tenants, and condominium/homeowner association boards and owners.

FEATURES

- 38,619 SF (32,018 warehouse, 6,601 SF office).
- Divisible to approximately 18,000 SF.
- 24' clear height
- Loading Doors: 5 dock high, 2 grade level (12' X 15')
- Asking \$0.75/SF warehouse, \$1.35/SF office NNN
- NNN's are approximately \$0.18/SF
- Parking: 50 stalls (1.3/1,000 parking ratio)
- Excellent access to I-405

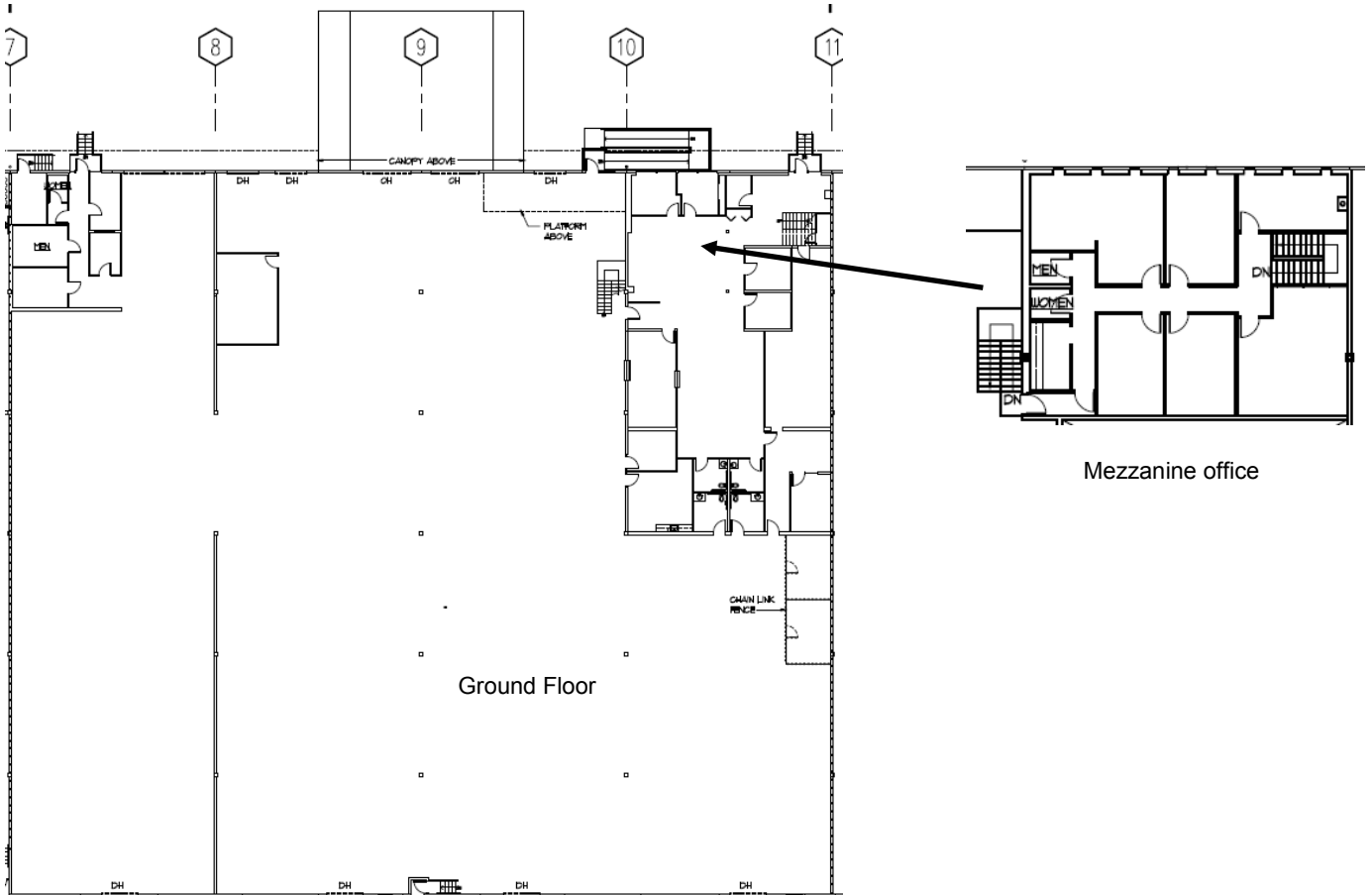
Contact:

Peter Townsend, RPA® Email: petert@suhrco.com
T: (425) 455-1950 F: (425) 462-1943
2010 156th Avenue NE, Suite 100, Bellevue, WA 98007

SUHRCO Management, Inc., AMO®



WAREHOUSE SPACE FOR LEASE



Parmac Industrial Park
10850 117th PI NE, Kirkland, WA 98033

Contact:
Peter Townsend, RPA® Email: petert@suhrco.com

T: (425) 455-1950
F: (425) 462-1943
2010 156th Avenue NE, Suite 100
Bellevue, WA 98007

